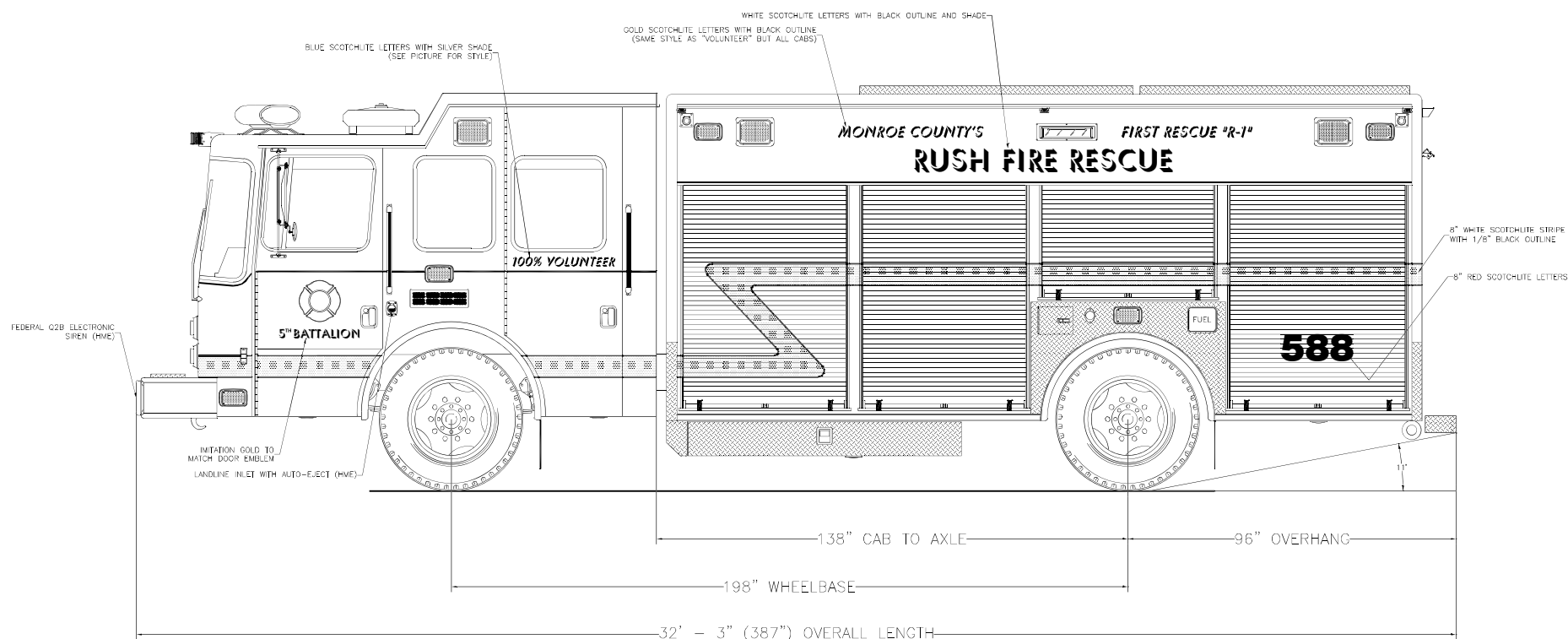


*EMERGENCY VEHICLES, INC.*

*Rush Fire Department  
Rush, New York*



*Streetside Overall*

THESE DESIGN/ENGINEERING DRAWING(S) ARE THE PROPERTY OF EMERGENCY VEHICLES, INC. THEY ARE PROPRIETARY, AND ARE FOR THE EXCLUSIVE USE OF YOUR ENTITY. ANY DIVULGING OF THIS DATA TO A THIRD PARTY IS PROHIBITED.

*Signature*

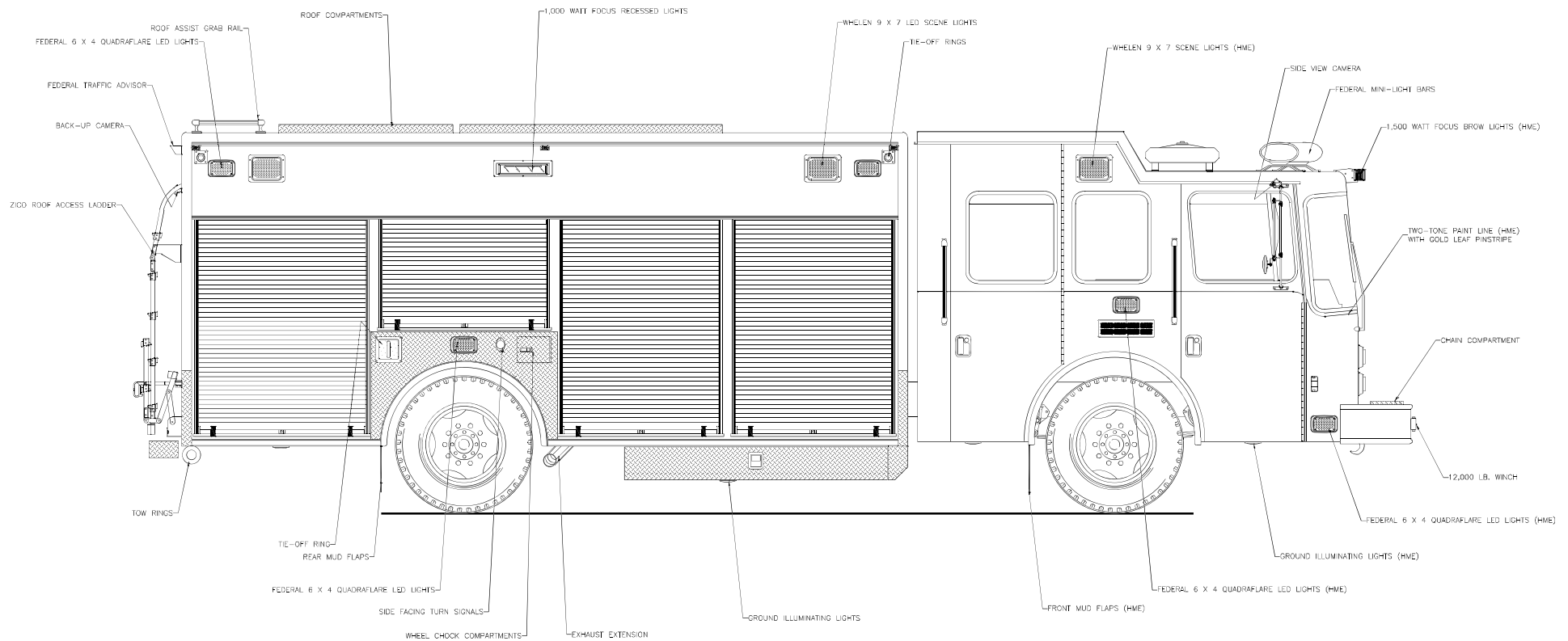
DATE: 09/22/08

REVISION 1	NS - 05/01/09
REVISION 2	NS - 05/15/09
REVISION 3	NS - 10/08/09
REVISION 4	NS - 11/02/09
REVISION 5	NS - 04/13/10

PRODDWC\RUSH\NW18-RM2795\11\NS\092208

*EMERGENCY VEHICLES, INC.*

*Rush Fire Department  
Rush, New York*



*Curbside Overall*

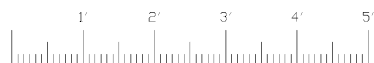
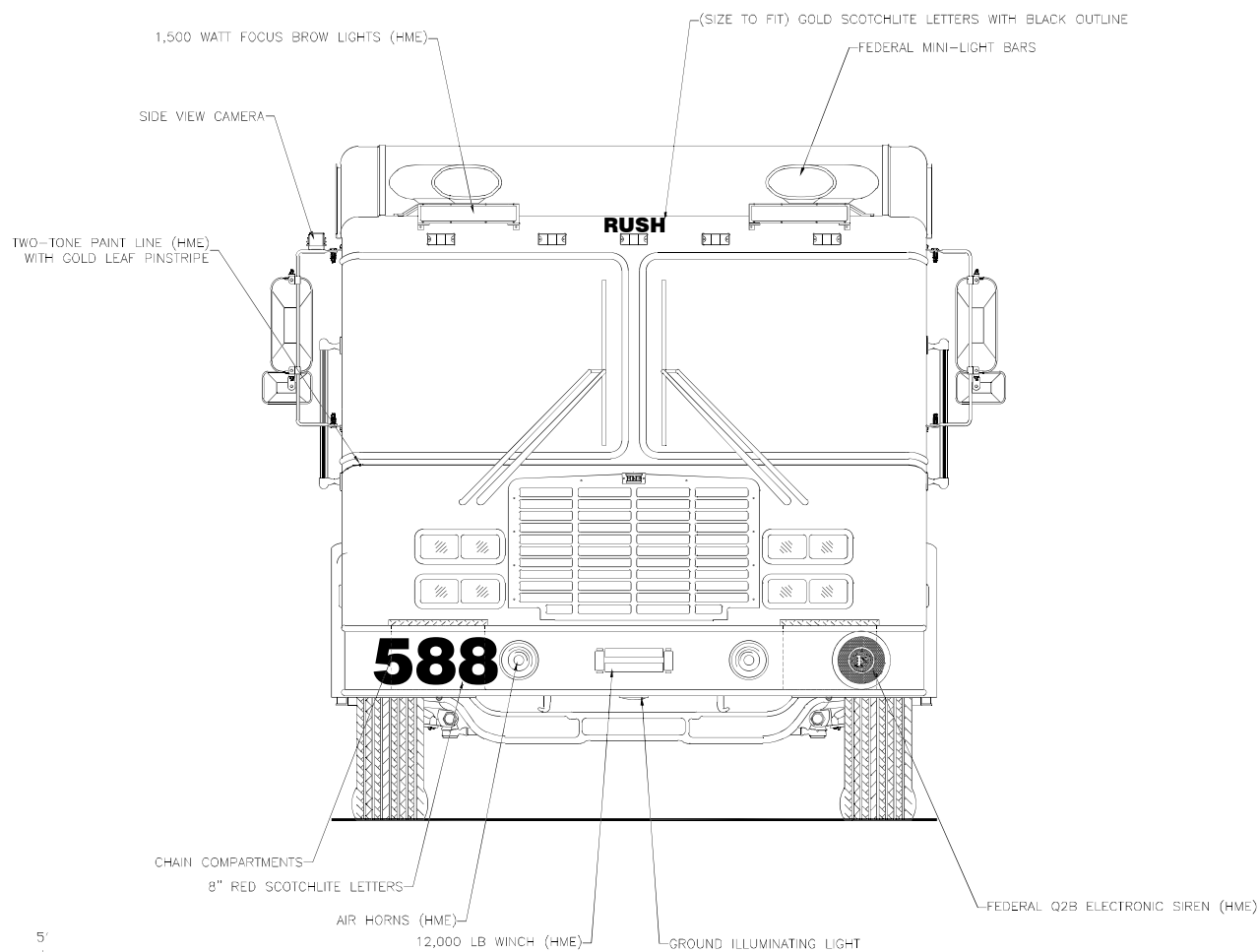
THESE DESIGN/ENGINEERING DRAWING(S) ARE THE PROPERTY OF EMERGENCY VEHICLES, INC. THEY ARE PROPRIETARY, AND ARE FOR THE EXCLUSIVE USE OF YOUR ENTITY. ANY DIVULGING OF THIS DATA TO A THIRD PARTY IS PROHIBITED.

DATE: 09/22/08	
REVISION 1	NS - 06/01/09
REVISION 2	NS - 06/15/09
REVISION 3	NS - 10/08/09
REVISION 4	NS - 11/02/09
REVISION 5	NS - 04/13/10

PRODDWG\RUSH\NWI18-RM2795\12\NS\092208

*EMERGENCY VEHICLES, INC.*

*Rush Fire Department  
Rush, New York*



*Front View*

THESE DESIGN/ENGINEERING DRAWING(S) ARE THE PROPERTY OF EMERGENCY VEHICLES, INC. THEY ARE PROPRIETARY, AND ARE FOR THE EXCLUSIVE USE OF YOUR ENTITY. ANY DIVULGING OF THIS DATA TO A THIRD PARTY IS PROHIBITED.

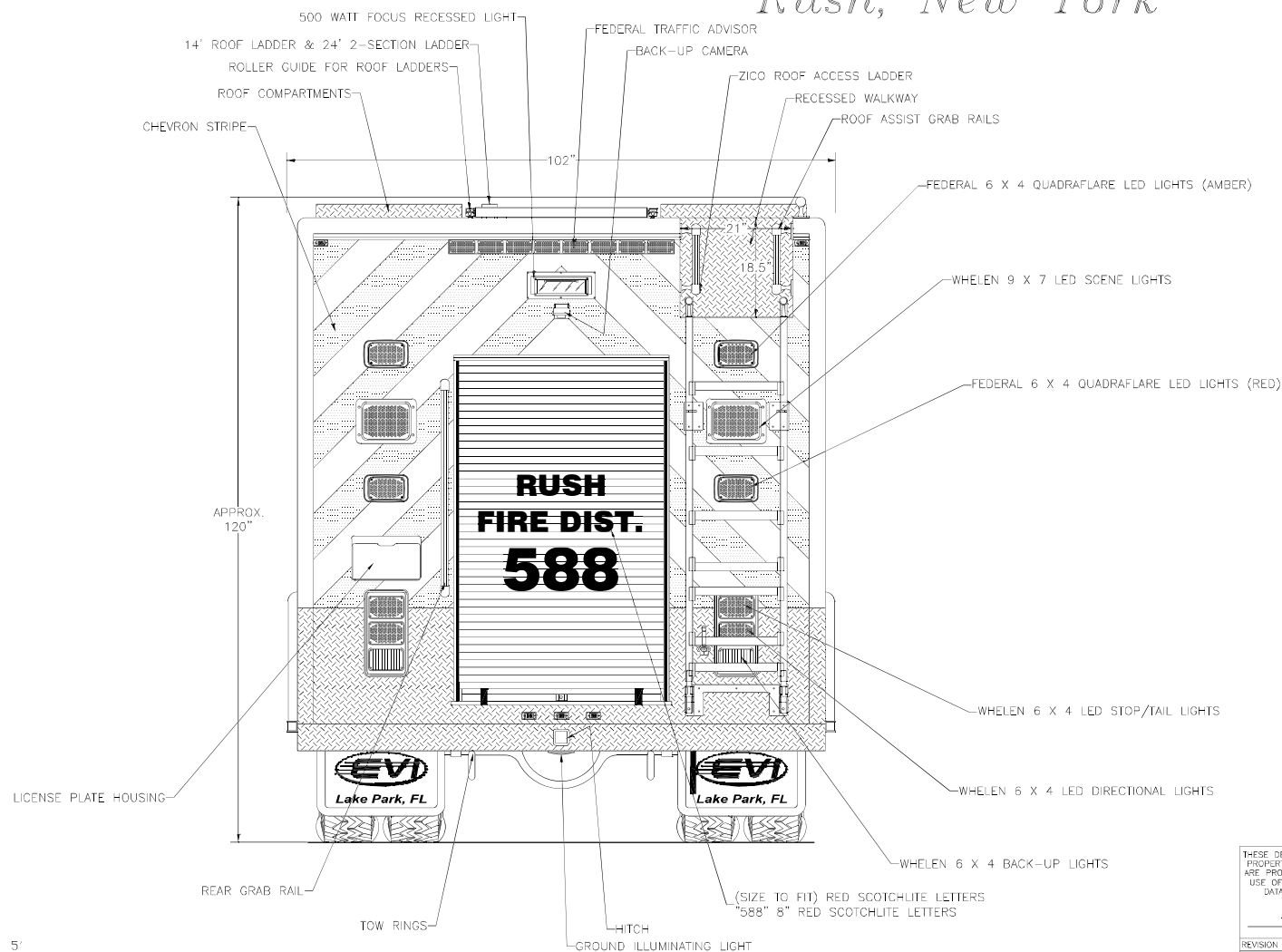
DATE: 09/22/08

REVISION 1	NS - 06/01/09
REVISION 2	NS - 06/15/09
REVISION 3	NS - 10/08/09
REVISION 4	NS - 11/02/09
REVISION 5	NS - 04/13/10

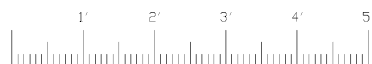
PRODDWG\RUSH\NWI18-RM2795\09\NS\092208

*EMERGENCY VEHICLES, INC.*

*Rush Fire Department  
Rush, New York*



*Rear View*



THESE DESIGN/ENGINEERING DRAWING(S) ARE THE PROPERTY OF EMERGENCY VEHICLES, INC. THEY ARE PROPRIETARY, AND ARE FOR THE EXCLUSIVE USE OF YOUR ENTITY. ANY DIVULGING OF THIS DATA TO A THIRD PARTY IS PROHIBITED.

DATE: 09/22/08

REVISION 1	NS - 06/01/09
REVISION 2	NS - 06/15/09
REVISION 3	NS - 10/08/09
REVISION 4	NS - 11/02/09
REVISION 5	NS - 04/13/10